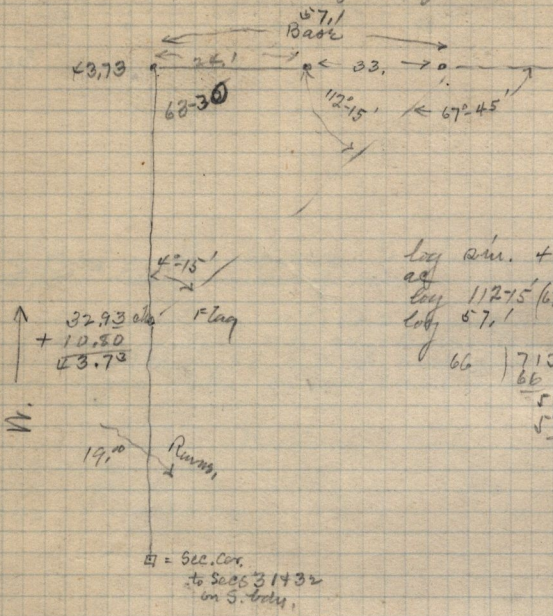


August 9th 1895. Friday
 With B. T. Campbell, David Jenkins and
 Wm. Kelly. I ran N. along 31st by T. H. 11th R. 4 E.
 Int Sec 2 3146. 168 ft N. of Sec. Cor. 1/2 Sec 2 31432



log sin. 4.15 = 8.869868
 log 112.75 = 2.052032
 log 67.45 = 1.828395
 log 57.1 = 1.756636

 66 | 713.1 ft
 66 |
 581

 528
 30
 6480
 6480

 7120

19.00 chs. Range N. 75° E. 32.93 chs. flag at triangulation
 point hence compute distance to top of hill which is 10.80
 chs makes point on hill 43.73 chs. 65.10 chs. Range S. E.
 78. chs. top of hill's 80. chs. final intersection N. City
 T.P. 47.1 chs N. of T.P. Cor. Stone in pile stones.

N. 1/4 Sec 2 31432, on northeast corner
 8.75 ch deep, Range E. 22.75 Range S.
 28.98 chs. flag, or hub. Hence angle to East water
 and post. N 50° 30' E. S. end of base, and
 N 66° 30' E. N. End of base. angle between = 132° 40'
 angle at S end of base bet. flag at N. End and Sec 28.98 =
 98° 45' angle at N. end between flag at S. end and post
 at Sta 28.98 ch. = 68° 05' Length of base = 71.435 chs.
 From flag at N. End of base a flag on line Int Sec 3143
 1325 N. 47° 22' W.
 From N. End of base's ran N. 10.90 chs to hub.